

PluralSax presents

Wein, Weib und Gesang Walzer (op. 333)

by

J. Strauss II (1869)

arr. B.J. Tordoff

for saxophone octet



List of Parts

Sopranino	2
Soprano	4
Alto I	6
Alto II	8
Tenor I	10
Tenor II	12
Baritone	14
Bass	16



Wein, Weib und Gesang Walzer

(op. 333)

Sopranino

J. Strauss II (1869)

arr. B.J. Tordoff

Introduktion, maestoso

1 *f*

12 *p* **A**

Tempo di Valse
14

33 *f* *p* **B** Walzer I

45 *p*

57 *ff*

68 *ffz* *f* *ff*

80 *mf* *f*

Walzer II

90 *pp* *ff* *pp*

103 *f* *p*

116 *f* *pp* *f*

128 *f* *pp* *ff* *pp*

141 *f* *p* *fz*

Walzer III

158 Musical staff 158 in treble clef with key signature of two sharps (F# and C#). It begins with a dynamic marking of *fz* (forzando) and a hairpin indicating a crescendo. A box labeled 'H' is placed above the staff. The staff concludes with another *fz* marking and a hairpin indicating a decrescendo.

171 Musical staff 171 in treble clef with key signature of two sharps. It features two first and second endings, marked '1' and '2'. The staff begins with a dynamic marking of *p* (piano).

181 Musical staff 181 in treble clef with key signature of two sharps. It features a dynamic marking of *f* (forte) at the end of the staff.

192 Musical staff 192 in treble clef with key signature of two sharps. It features a dynamic marking of *f* (forte) at the end of the staff.

202 Musical staff 202 in treble clef with key signature of two sharps. It features two first and second endings, marked '1' and '2'. The section is titled 'Walzer IV' and includes tempo markings 'rall' (rallentando) and 'a tempo'. A dynamic marking of *f* (forte) is present.

213 Musical staff 213 in treble clef with key signature of two sharps. It features a dynamic marking of *f* (forte) and a box labeled 'J' above the staff.

233 Musical staff 233 in treble clef with key signature of one sharp (F#). It features a dynamic marking of *f* (forte) at the end of the staff.

244 Musical staff 244 in treble clef with key signature of one sharp. It features two first and second endings, marked '1' and '2'. The section is titled 'Rasch' (Rasche) and includes dynamic markings of *f* (forte), *ff* (fortissimo), and *ffz* (forzando fortissimo).

Wein, Weib und Gesang Walzer

(op. 333)

Soprano

J. Strauss II (1869)

arr. B.J. Tordoff

Introduktion, maestoso

158 

171 

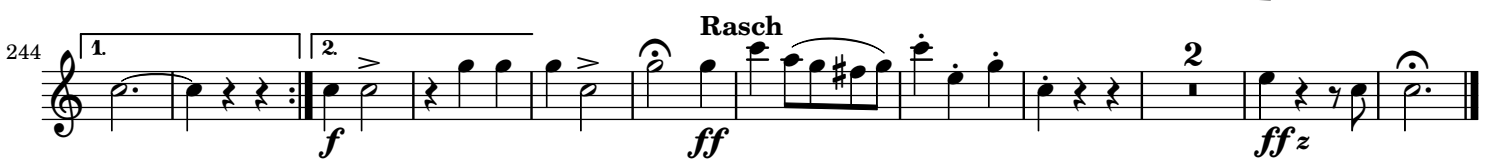
181 

191 

201 

212 

232 

244 

Walzer IV

2

rall

H
a tempo 11

Rasch

Wein, Weib und Gesang Walzer

(op. 333)

Alto I

J. Strauss II (1869)

arr. B.J. Tordoff

Introduktion, maestoso

f

Tempo di Valse

p

A

B Walzer I

f **p** **p**

p **p**

p **p**

C

ff **ffz** **ffz** **f**

ff **mf** **f**

1 **2**

Walzer II

f **pp**

rit **a tempo**

ff **pp** **f**

E

1 **2**

p

1 **2**

f **pp** **f**

F

pp **rit** **a tempo** **ff**

Walzer III

137 *pp* *f* *p*

147 *p* *pp* *f*

159 *fz*

171 *p* *p*

180

190 *f*

200 *f* *p* *f*

Walzer IV

211 *rall* *f* *p* *a tempo*

222 *f* *p* *f*

232

244 *f* *ff* *Rasch* *ffz*

Wein, Weib und Gesang Walzer

(op. 333)

Alto II

J. Strauss II (1869)

arr. B.J. Tordoff

Introduktion, maestoso

f

A **Tempo di Valse**

p

B **Walzer I**

p *p*

C

ffz *f* *ff*

D **rit** **a tempo**

pp *ff* *pp*

E

f *p*

F **rit** **a tempo**

f *pp* *ff* *pp*

144 **Walzer III** G

p *p*

155

pp < fz *fz* *fz*

167 H

p

179

191

f

202 **Walzer IV** 2 *rall* *a tempo*

f *p*

213 I

f

224 J

f *p* *f*

234 1

f

245 **Rasch**

f *ff* *ffz*

Wein, Weib und Gesang Walzer

(op. 333)

Tenor I

J. Strauss II (1869)

arr. B.J. Tordoff

Introduktion, maestoso

f

12 **A** **Tempo di Valse**
2 *p*

23 *f*

34 **B** **Walzer I**
p *p*

44 *espr.* *p* *p*

56 *espr.* *ff*

68 **C**
ffz *ffz* *f*

79 *ff* *mf* *f* **Walzer II**
f

89 **D** *rit* *a tempo*
pp *ff*

101 **E** *pp* *f* *p* *p dolce* *mf* *sol*

112 *f* *p*

125 **F** *f* *pp* *rit* *a tempo*

136 **Walzer III**
ff *pp* *f* *p*

148 **G**
p *pp* *fz* *fz*

160 *fz* **H**

171 *p*

182 *f*

193

204 **I**
a tempo
Walzer IV *rall* *f* *p*

214 *f* **J**

225 *p* *f*

235 *tr* *f*

246 **Rasch**
f *ff* *ffz*

Wein, Weib und Gesang Walzer

(op. 333)

Tenor II

J. Strauss II (1869)

arr. B.J. Tordoff

Introduktion, maestoso

f

9

18 **A** **Tempo di Valse**
2
p

30 **B** **Walzer I**
f *p*

41 *p*

52 *p*

63 **C**
ff *ffz* *ffz* *f*

75 **1**
ff *mf* *f*

87 **2** **D** **Walzer II** **rit a tempo**
f *pp*

98 **1** **2**
ff *pp* *f* *p* *p dolce*

109 **E** **soli**
mf *f*

122 **1** **2** **F** **rit a tempo**
p *f* *pp*

133 *ff* *pp* *f*

144 **Walzer III** **G**
p

155 *pp fz fz fz* **H**

166 1 2 *p*

177

189 *f*

201 1 2 **Walzer IV** *f* **I** *a tempo* *p*

212 **J**

224 1 2 *f*

235 1

246 2 **Rasch** *f ff ffz*

Wein, Weib und Gesang Walzer

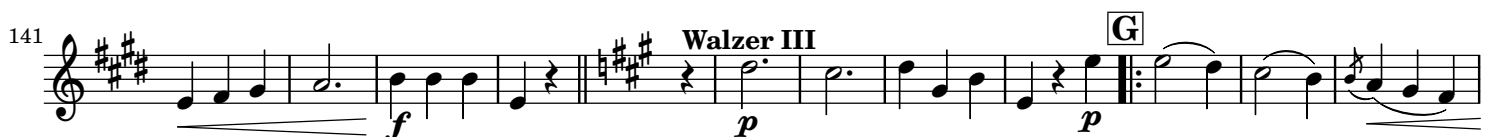
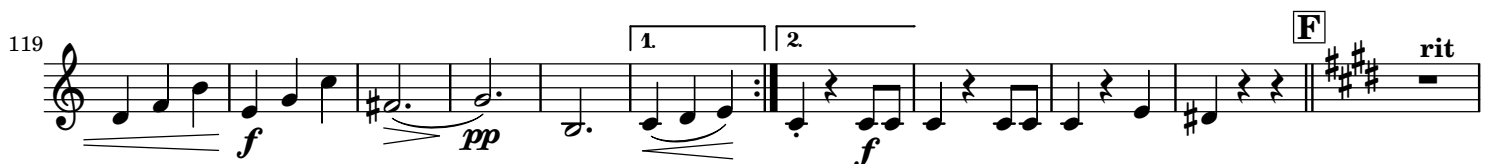
(op. 333)

Baritone

J. Strauss II (1869)

arr. B.J. Tordoff

Introduktion, maestoso



152 

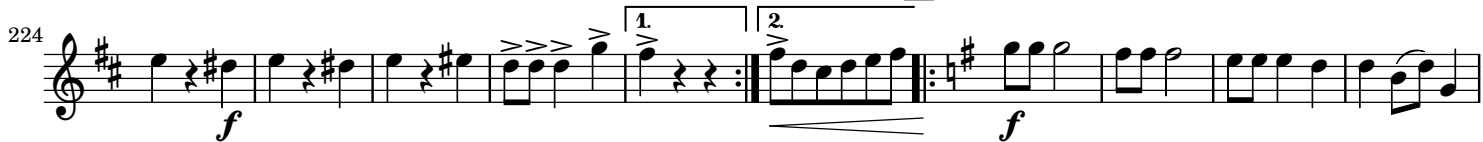
165 

177 

189 

203 

213 

224 

234 

245 

Wein, Weib und Gesang Walzer

(op. 333)

Bass

J. Strauss II (1869)

arr. B.J. Tordoff

Introduktion, maestoso

152 *pp* *fz* *fz* *fz*

164 *ffz*

175 **H** *p* *f*

192

205 **I** *rall* *a tempo* **II** *f*

226 **J** *f*

236 **I**

246 *f* **Rasch** *ff* *ffz*